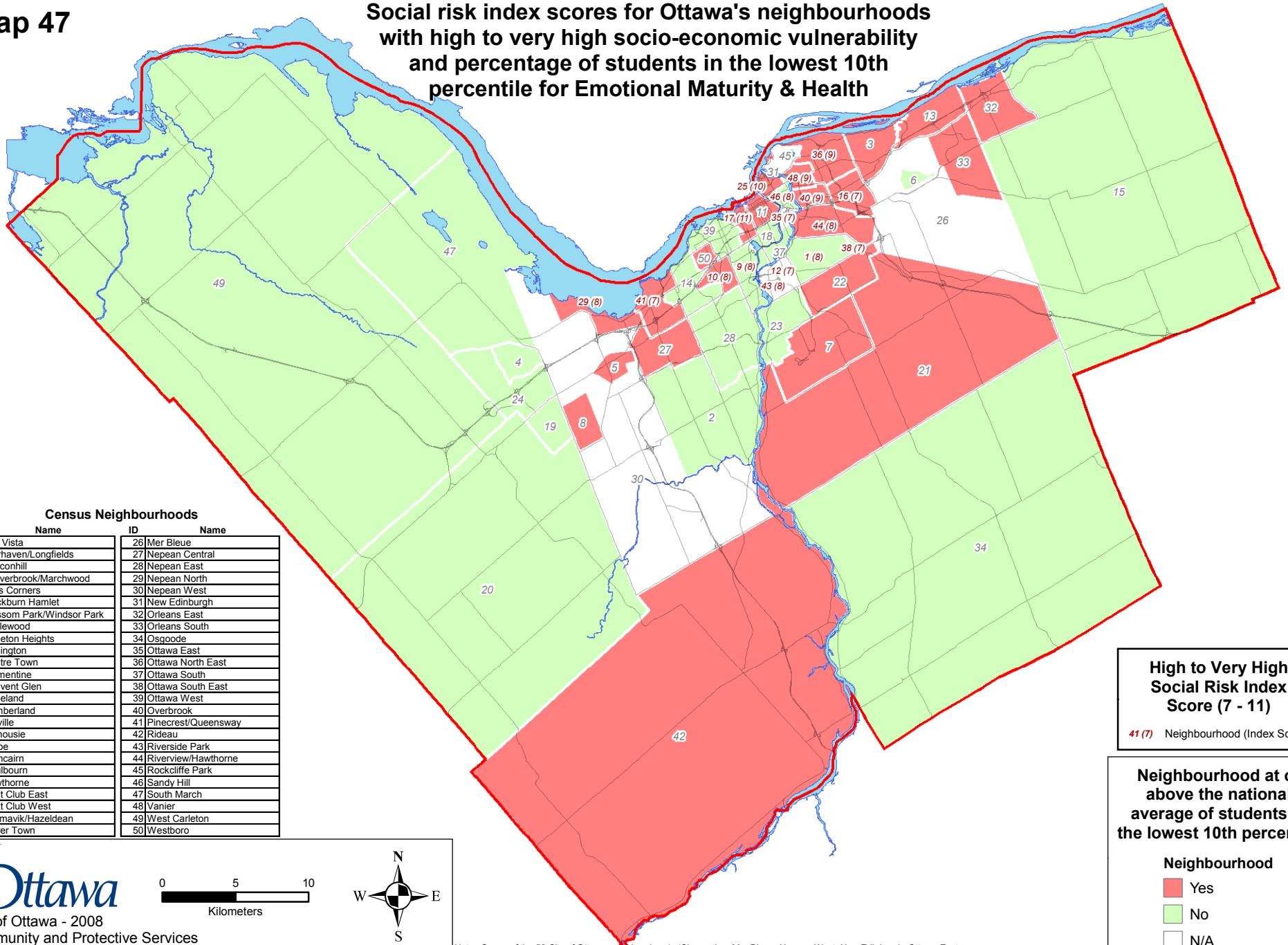


# Understanding the Early Years - Community Mapping Report

## Social risk index scores for Ottawa's neighbourhoods with high to very high socio-economic vulnerability and percentage of students in the lowest 10th percentile for Emotional Maturity & Health

### Map 47



#### Census Neighbourhoods

ID	Name	ID	Name
1	Alta Vista	26	Mer Bleue
2	Barrhaven/Longfields	27	Nepean Central
3	Beaconhill	28	Nepean East
4	Beaverbrook/Marchwood	29	Nepean North
5	Bells Corners	30	Nepean West
6	Blackburn Hamlet	31	New Edinburgh
7	Blossom Park/Windsor Park	32	Orleans East
8	Bridlewood	33	Orleans South
9	Carleton Heights	34	Osgoode
10	Carlington	35	Ottawa East
11	Centre Town	36	Ottawa North East
12	Clementine	37	Ottawa South
13	Convent Glen	38	Ottawa South East
14	Copeland	39	Ottawa West
15	Cumberland	40	Overbrook
16	Cyrville	41	Pinecrest/Queensway
17	Dalhousie	42	Rideau
18	Glebe	43	Riverside Park
19	Glencairn	44	Riverview/Hawthorne
20	Goulbourn	45	Rockcliffe Park
21	Hawthorne	46	Sandy Hill
22	Hunt Club East	47	South March
23	Hunt Club West	48	Vanier
24	Katimavik/Hazeldean	49	West Carleton
25	Lower Town	50	Westboro

**High to Very High Social Risk Index Score (7 - 11)**  
 41 (7) Neighbourhood (Index Score)

**Neighbourhood at or above the national average of students in the lowest 10th percentile**

**Neighbourhood**

- Yes
- No
- N/A

City of Ottawa - 2008  
 Community and Protective Services  
 Strategic Initiatives and Business Planning - Geomatics

Note: Seven of the 50 City of Ottawa neighbourhoods (Clementine, Mer Bleue, Nepean West, New Edinburgh, Ottawa East, Riverside Park, and Rockcliffe Park) were excluded from data analysis due to a Kindergarten population size of less than the required 40 students.