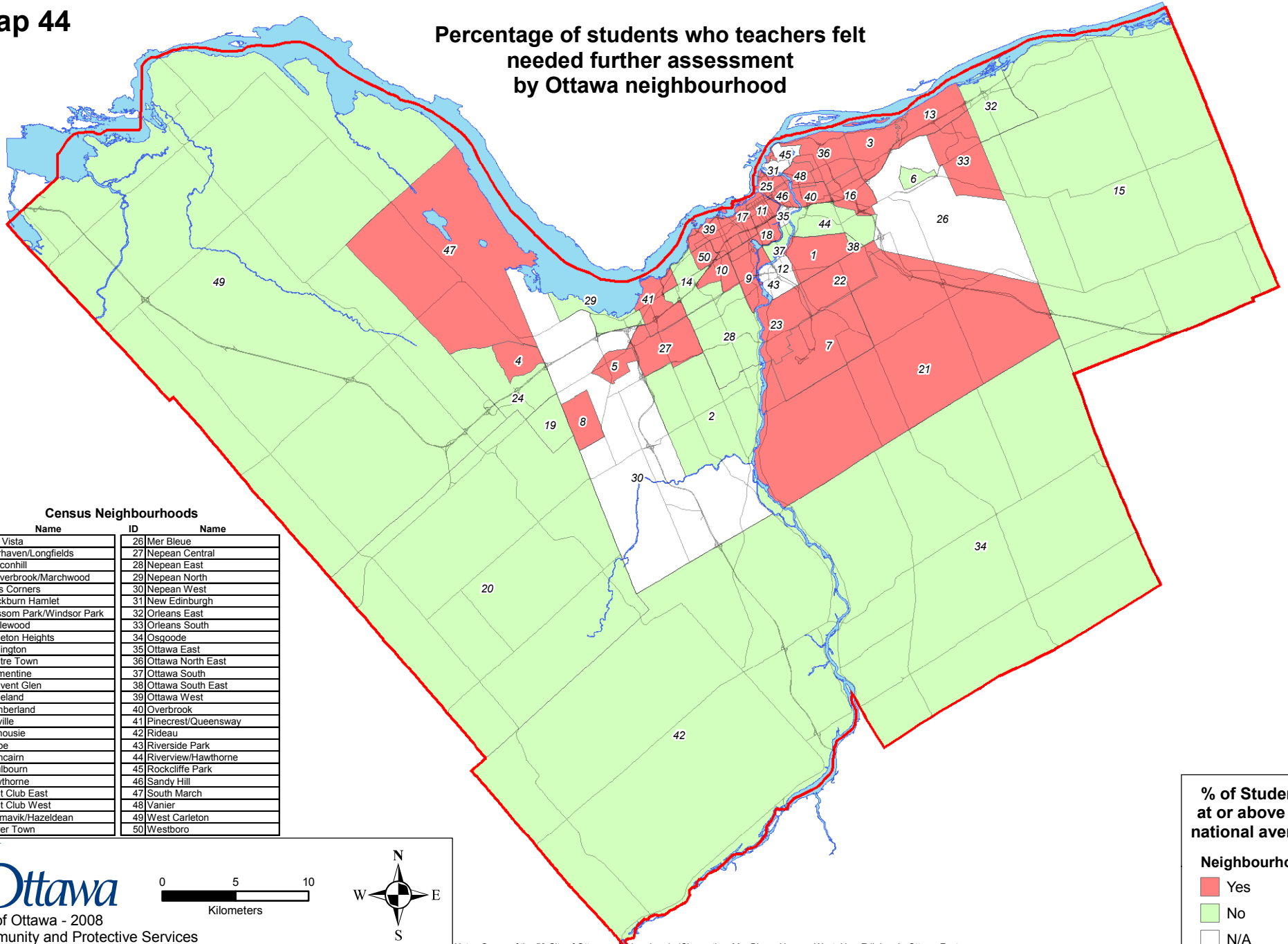


Map 44

Percentage of students who teachers felt needed further assessment by Ottawa neighbourhood



% of Students at or above the national average

- Neighbourhood**
- Yes
 - No
 - N/A

Census Neighbourhoods	
ID	Name
1	Alta Vista
2	Barrhaven/Longfields
3	Beaconhill
4	Beaverbrook/Marchwood
5	Bells Corners
6	Blackburn Hamlet
7	Blossom Park/Windsor Park
8	Bridlewood
9	Carleton Heights
10	Carlington
11	Centre Town
12	Clementine
13	Convent Glen
14	Copeland
15	Cumberland
16	Cyville
17	Dalhousie
18	Glebe
19	Glencairn
20	Goulbourn
21	Hawthorne
22	Hunt Club East
23	Hunt Club West
24	Katimavik/Hazeldean
25	Lower Town
26	Mer Bleue
27	Nepean Central
28	Nepean East
29	Nepean North
30	Nepean West
31	New Edinburgh
32	Orleans East
33	Orleans South
34	Osgoode
35	Ottawa East
36	Ottawa North East
37	Ottawa South
38	Ottawa South East
39	Ottawa West
40	Overbrook
41	Pinecrest/Queensway
42	Rideau
43	Riverside Park
44	Riverview/Hawthorne
45	Rockcliffe Park
46	Sandy Hill
47	South March
48	Vanier
49	West Carleton
50	Westboro

City of Ottawa - 2008
Community and Protective Services
Strategic Initiatives and Business Planning - Geomatics

0 5 10
Kilometers

Note: Seven of the 50 City of Ottawa neighbourhoods (Clementine, Mer Bleue, Nepean West, New Edinburgh, Ottawa East, Riverside Park, and Rockcliffe Park) were excluded from data analysis due to a Kindergarten population size of less than the required 40 students.